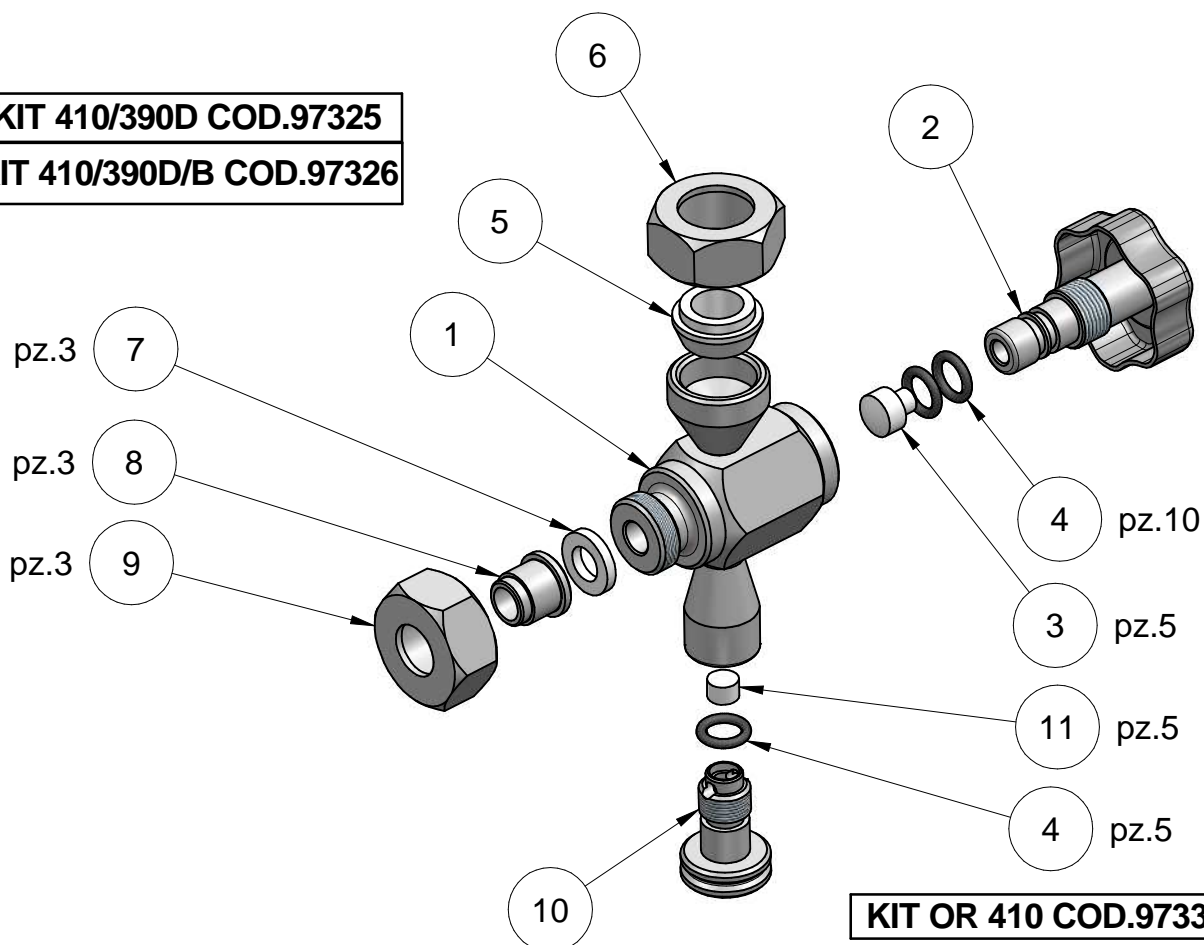




KIT 410/390D COD.97325
 KIT 410/390D/B COD.97326



KIT OR 410 COD.97331

COD. F8A210 (304L) - F8B210 (316L)			
Nr.	Article No.	Designation	Qty
1	8A004	HEXAGONAL NUT	1
2	<i>F8A400</i>	<i>SET SPINDLE WITH HANDLE+OR+PIN (teflon)</i>	<i>1</i>
3	97079	PIN	1
4	97072	GASKET OR	2
5	97089-90-91-92	GASKET Ø14-Ø16-Ø20-Ø24	1
6	8A052	NUT G3/4"	1
7	97066	GASKET §18	1
8	8A041	PIPE §17	1
9	8A051	NUT G 1/2"	1
10	8A029	SPINDLE	1
11	97080	PIN §8,5	1