

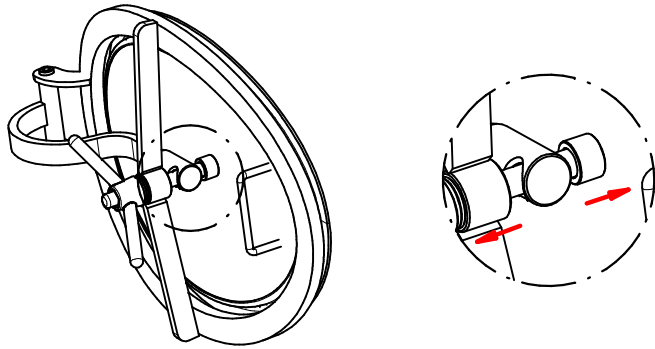


ZORZINI S.p.a.

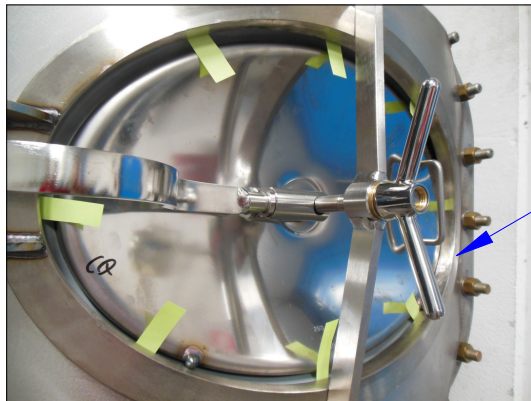
rev.01 08-07-14

After welding-control and assembling

6 Once closed the manway door, make sure that the joint works correctly and is not blocked. If not, re-open the door and proceed again at closing.



7 After welding the frame onto the tank and mounting the cover, check after tightening that the gasket adheres to the tank all along its entire perimeter.



Checking door/frame bending radius and matching.

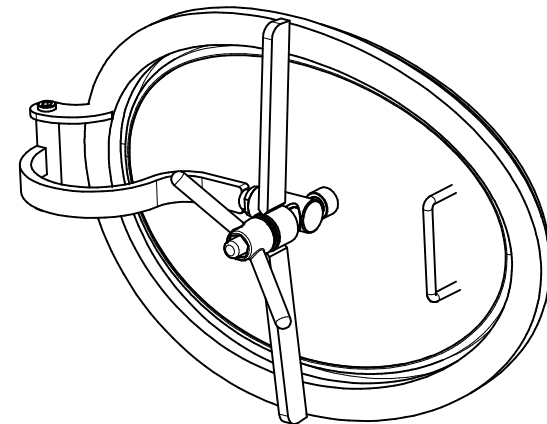
For the complete instruction manual please refer to the website of Zorzini Spa:
www.zorzinispa.com



ZORZINI S.p.a.

rev.01 08-07-14

Addendum to the general instruction manual Zorzini oval manwaydoors typ 200R and 200RP





ZORZINI S.p.a.

rev.01 08-07-14

WELDING SYSTEM

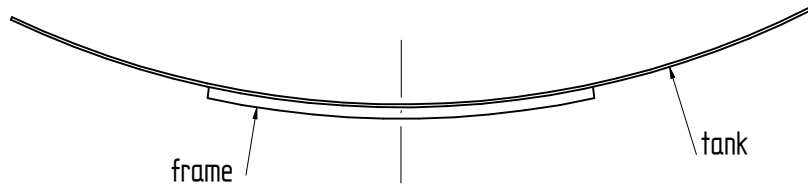
1 Zorzini Spa ensures the proper radius of the frame for a perfect fit of the frame to the tank, only and exclusively for the measures stated in the catalog Zorzini.

To be noted that the frame and the tank must necessarily have the same radius.

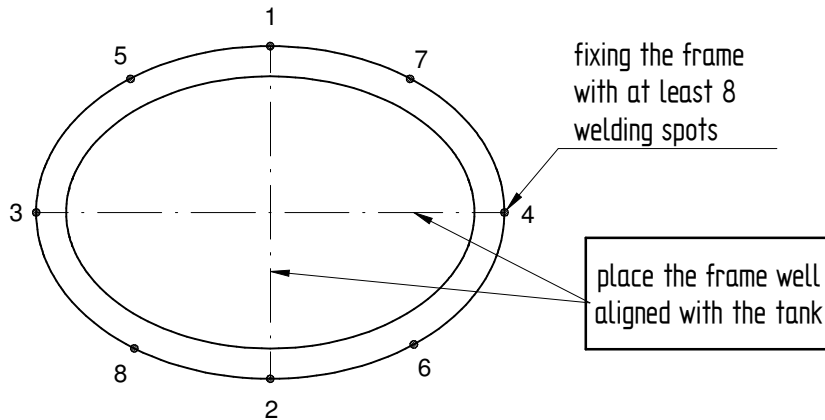
Zorzini Spa checks the correct coupling of lid and frame of each single product before the shipment.

Therefore eventual deformation of the frame occurred after the installation and the resulting problems will not be object of the guarantee.

2 Make sure that the radius of the tank is not deformed and that it fits perfectly with the frame.



3 Fix the frame to the tank through welding spots as in the picture, and move to the continuous welding along the perimeter just after that.



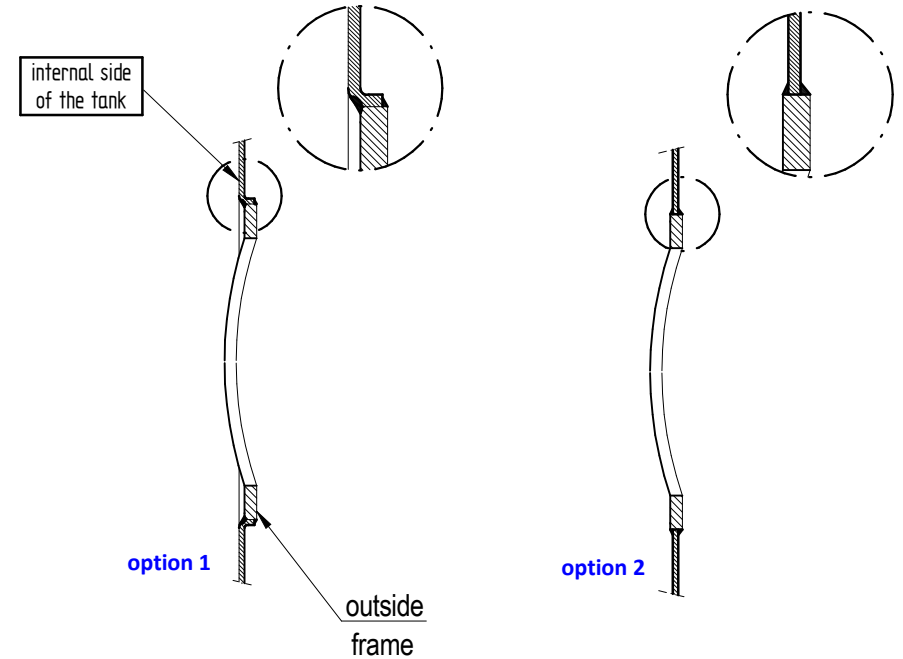
4 In order to avoid the overheating and the consequent deformation of the frame, we suggest to weld with the method TIG (UNI ISO 287-1)



ZORZINI S.p.a.

rev.01 08-07-14

WELDING OPTIONS



5 The identification codes on the frame and on the lid must be identical. The lid must be centered in the frame and well positioned on the two pins.

